

## SCANLIFT SL185

Off Road  
Access  
Platform



# SCANLIFT SL185

## Trailer Mounted Access Platform

### Standard Features:

Designed to work in Scandinavian pine forests and ideal for tree surgery, the Scanlift's diesel power coupled with a four wheel drive chassis will plough it's way through deep clinging mud, snow or undergrowth enabling you to get where you need to be.

It is equipped with both 'crab' and four wheel steering enabling you to set up in the tightest spaces and it's 18 metre working height is complimented by the addition of a 'fly jib' enabling you to reach over obstacles.

### Optional Equipment:

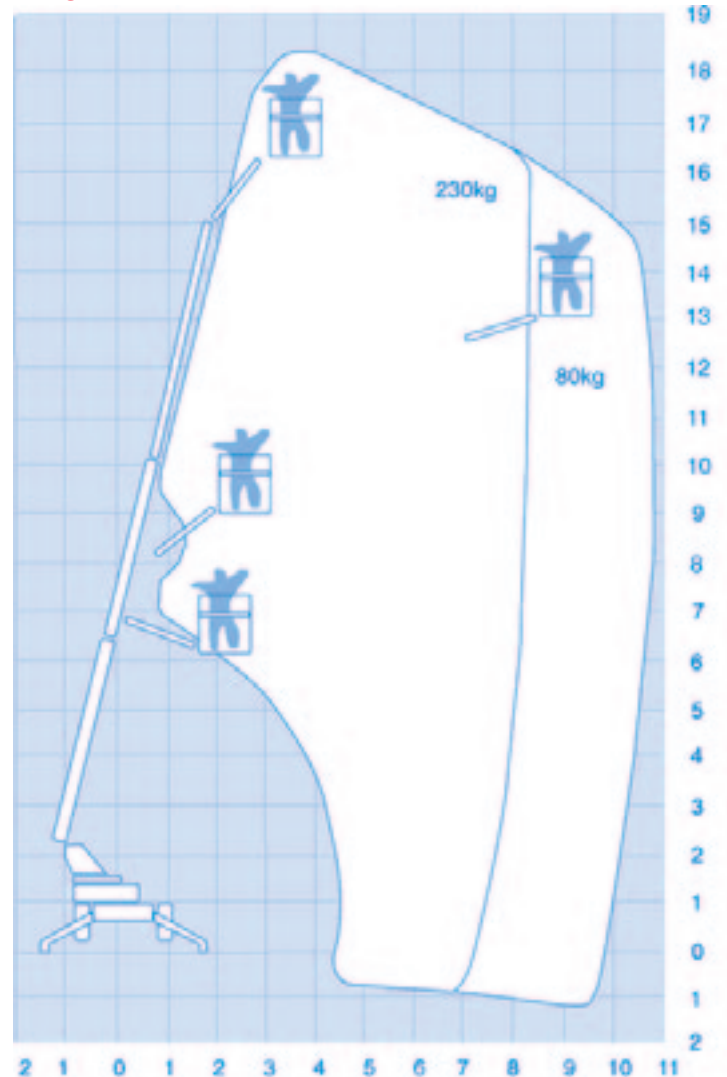
- Self propelled
- Four wheel drive
- Four wheel and crab steering
- Diesel engine
- Off road tyres
- Fly boom
- Hydraulic outriggers



### Technical Data and Measurements

Max. height	18.0m
Weight	3,000Kg,
Max outreach	10.5m
Max reach	18.5m
Swl	230Kg
Gvw	3070
Basket rotation	90 deg
Outrigger spread	3.9m
Length	6.9
Stowed width	1.92m
Height stowed	2.3m
Platform size	1m x 1.5m

### Range of Motion:



*Rapid*  
**PLATFORMS**

London Road, Spellbrook, Bishop's Stortford,  
Hertfordshire CM23 4AU

**Tel: 01279 501 501**

**Fax: 01279 501 100**

**E-mail: [info@rapidplatforms.co.uk](mailto:info@rapidplatforms.co.uk)**

**Web site: [www.rapidplatforms.co.uk](http://www.rapidplatforms.co.uk)**